

1 Package Contents 包裝內容

Kindly ensure the product's contents upon unpacking; please refer to the hardware manual within the CD regarding the product 's specifications and important notices.
打開包裝確認產品包裝內容，並請詳細閱讀此手冊，認識產品規格特性與注意事項。



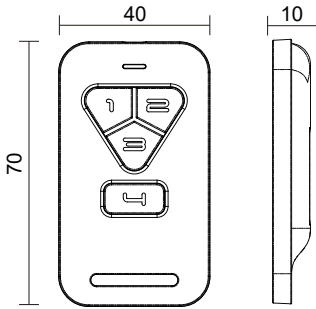
Smart Key 智能鑰匙

- HSK-20M is a dual-frequency product.
- HSK-20M為雙頻產品



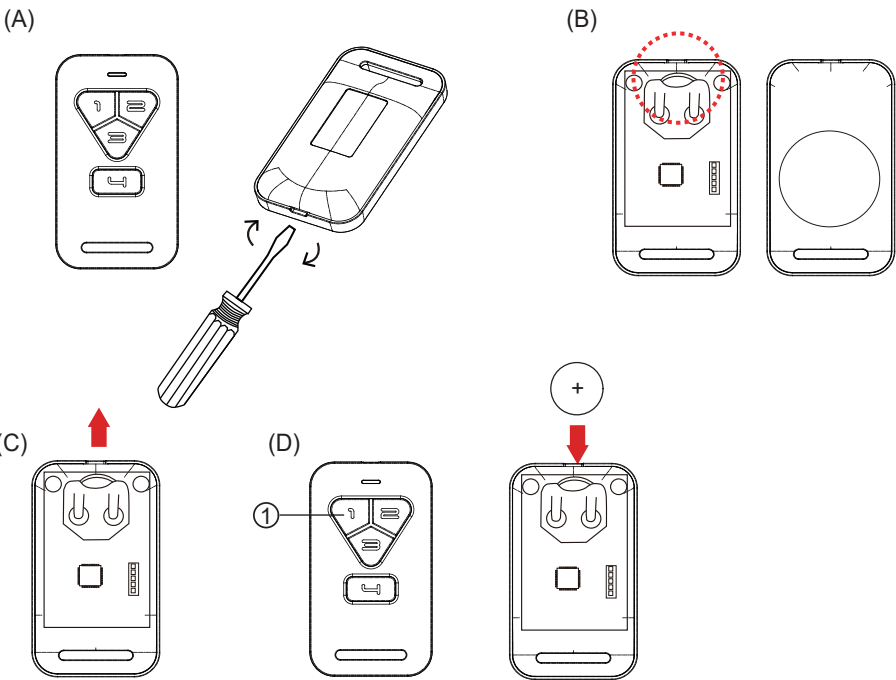
Quick Start Guide x 1
快速安裝手冊

2 Physical Dimensions 外觀尺寸



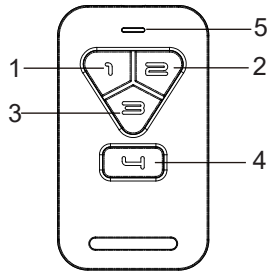
Scale:mm

3 Battery Replacement 電池更換



- Please be careful to remove the shell, to avoid the damage.
- (A).Please use a tool to open the plastic tenon of the housing edge.
- (B).Open the cover and take out the battery.
- (C).Please follow the arrow direction to take out the battery
- (D).Before put in the new battery, please press ① key for 1 second to drain residual power (Please note electrical polarit,positive and negative) then put in the new battery.
- If the Red / Green LED flash alternately , it means normal.
- After replace the battery, please follow above process to restore it.

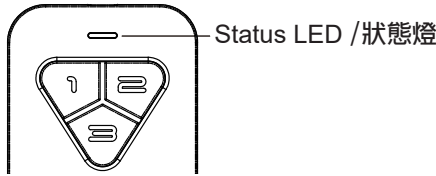
- 拆解外殼時，請勿用力過大，以免造成外殼損壞。
- (A). 使用工具撬開卡榫。
- (B). 將外殼打開後，取出裝有電池的模組。
- (C). 電池請依照箭頭方向取下。
- (D). 在裝入新電池前，請先按 ① 按鍵1秒，消除殘餘電力，再裝入新電池(需注意電池+,-極性)，若紅綠燈閃爍完成，表示正常。
- 電池更換完成後，請再依照上述步驟組合還原。



1	Exit Button / 開門按鈕
2	Reserved / 功能保留
3	Reserved / 功能保留
4	SOS Button / 求助按鈕
5	Status LED / 狀態燈

- Please press keypad 1, hold it and then press keypad 4. When Red/Green LED flashes , it means already "enabled" or "disabled" the infrared auto-sensing. (The mold of automatically sending signal will reduce the battery lifespan)

- 請先按按鍵1不放，再按按鍵4，當紅綠燈閃爍時，表示已開啓或關閉自動發送訊號。（自動發送訊號模式會影響電池壽命）



LED status description :

- Pressing the button with Green LED on, it means normal.
- Pressing the button with Red LED on, it means the battery needs to be replaced.
- Please press keypad 1, hold it and then press keypad 4. When Red/Green LED flashes , it means already "enabled" or "disabled" the infrared auto-sensing.

狀態燈說明：

- 按按鍵亮綠燈時，表示正常。
- 按按鍵亮紅燈時，表示需更換電池。
- 請先按按鍵1不放，再按按鍵4，當紅綠燈閃爍時，表示已開啓或關閉自動發送訊號。

HUNDURE
HUNDURE TECHNOLOGY CO., LTD.

HSK-20M SMART KEY FOB

快速安裝手冊

Ver. 1.0

One Year Limited Warranty 產品保固證明書

We warrants this product against defect in material or workmanship for 1 year from the date of purchase. If such a defect is discovered within this warranty limitation, contact your direct vendor for repair or replacement of your unit.
When returning the product, you must ship the product in its original packaging or packaging that gives an equal degree of protection. This warranty becomes invalid if the factory-supplied serial number has been removed or altered on the product.
This warranty does not cover cosmetic damage or damage due to acts of God, accident, misuse, abuse, negligence or modification of any part of the product. This warranty does not cover damage due to improper operation or maintenance, connection to improper equipment, or attempted repair by anyone other than We. In no event shall We liability exceed the price paid for the product from direct, indirect, special, incidental, or consequential, damages resulting from the use of the product the product, its accompanying software, or it's documentation. We makes no warranty or representation expressed, implied, or statutory, with respect to its products,contents of use of this documentation and all accompanying software, and specially disclaimsy its qualit , performance, merchantability or fitness for any particular purpose. We reserves the right to revise or update its product, software or documentation without obligation to notify any individual or entity.

我們保固此產品於購買日起一年之內因為材料上或是生產製造中所產生的缺陷，所造成的外觀上，或是功能上的缺陷及故障問題。若是您在此保固期限之內發現此類問題，請聯絡本公司的服務人員，退回此產品，我們將替您免費維修或是更換產品。當您退回此產品時，請依照原始的包裝方式包裝此產品，或是給予同等級的包裝保護;若是我們收到此產品時，產品上沒有出廠時的序號標籤，或是產品已經拆開或與出廠時有任何不同，這個保固將變得無效。此保固不包含天然的，以及人為的破壞或改變、或是意外事故、不正常操作、誤用、濫用等外在因素所造成的損壞。此保固不包含不當的操作或保養，不當的連結至其他設備，或是由本公司以外的人員企圖修復此產品。起因於使用這種產品，在間接、特別、次要因素，或者隨之發生，造成伴隨著軟件或其它文檔的損害，本公司的責任在任何情況下都不得超過這產品的售價。關於產品的軟件和文檔編制的全部內容，本公司並沒有表示保證或法定它的性能、暢銷性、或者適用於任何特別的目的。本公司保留權利修正或者不斷改進它的產品，軟件或者文檔編製無義務通知任何個人或者購買者。

Model 型號	Serial no. 序號	Date of Purchase 購買日期	Reseller stamp 經銷商

Warranty will be valid only after filling out this form and stamped or signed by reseller!
此保固書必須填妥各項內容，並且蓋有經銷商印鑑始為有效。